

**Belted Drives and Sheaves**

**TB Wood's**

*Belted Drives*  
Chambersburg, PA - USA  
**1-888-829-6637** – Press #5  
*For application assistance:*  
1-888-829-6637 – Press #7

**Couplings**

**Ameridrives Couplings**

*Mill Spindles, Ameriflex, Ameridisc*  
Erie, PA - USA  
**1-814-480-5000**  
*Gear Couplings*  
San Marcos, TX - USA  
**1-800-458-0887**

**Ameridrives Power Transmission**

*Universal Joints, Drive Shafts, Mill Gear Couplings*  
Green Bay, WI - USA  
**1-920-593-2444**

**Bibby Turboflex**

*Disc, Gear, Grid Couplings, Overload Clutches*  
Dewsbury, England  
**+44 (0) 1924 460801**  
Boksburg, South Africa  
**+27(0) 11 918 4270**

**Guardian Couplings**

*Engineered Flywheel Couplings, Engine Housings and Pump Mounts, Flexible Shaft Couplings*  
Michigan City, IN - USA  
**1-219-874-5248**

**Huco Dynatork**

*Precision Couplings and Air Motors*  
Hertford, England  
**+44 (0) 1992 501900**  
Chambersburg, PA - USA  
**1-888-829-6637**

**Couplings Cont.**

**Lamiflex Couplings**

*Flexible Couplings, Bearing Isolators, and Coupling Guards*  
Cotia, SP - Brasil  
**+55 (11) 4615-6300**

**TB Wood's**

*Elastomeric Couplings*  
Chambersburg, PA - USA  
**1-888-829-6637** – Press #5  
*For application assistance:*  
1-888-829-6637 – Press #7  
*General Purpose Disc Couplings*  
San Marcos, TX - USA  
**1-888-449-9439**

**Electromagnetic Clutches and Brakes**

**Inertia Dynamics**

*Spring Set Brakes; Power On and Wrap Spring Clutch/Brakes*  
New Hartford, CT - USA  
**1-800-800-6445**

**Matrix International**

*Electromagnetic Clutches and Brakes, Pressure Operated Clutches and Brakes*  
Brechtin, Scotland  
**+44 (0) 1356 602000**  
New Hartford, CT - USA  
**1-800-825-6544**

**Warner Electric**

*Electromagnetic Clutches and Brakes*  
New Hartford, CT - USA  
**1-800-825-6544**  
*For application assistance:*  
1-800-825-9050

Saint Barthélemy d'Anjou, France  
**+33 (0)2 41 21 24 24**

*Precision Electric Coils and Electromagnetic Clutches and Brakes*

Columbia City, IN - USA  
**1-260-244-6183**

**Engineered Bearing Assemblies**

**Kilian Manufacturing**

*Engineered Bearing Assemblies*  
Syracuse, NY - USA  
**1-315-432-0700**

**Gearing**

**Bauer Gear Motor**

*Geared Motors*  
Esslingen, Germany  
**+49 (711) 3518-0**  
Somerset, NJ - USA  
**1-732-469-8770**

**Boston Gear**

*Enclosed and Open Gearing, Electrical and Mechanical P.T. Components*  
Charlotte, NC - USA  
**1-800-825-6544**  
*For application assistance:*  
1-800-816-5608

**Nuttall Gear and Delroyd Worm Gear**

*Worm Gear and Helical Speed Reducers*  
Niagara Falls, NY - USA  
**1-716-298-4100**

**Heavy Duty Clutches and Brakes**

**Industrial Clutch**

*Pneumatic and Oil Immersed Clutches and Brakes*  
Waukesha, WI - USA  
**1-262-547-3357**

**Svendborg Brakes**

*Industrial Brakes and Brake Systems*  
Vejstrup, Denmark  
**+45 63 255 255**

**Twiflex Limited**

*Caliper Brakes and Thrusters*  
Wichita Falls, TX - USA  
**1-844-723-3483**  
Twickenham, England  
**+44 (0) 20 8894 1161**

**Heavy Duty Clutches and Brakes Cont.**

**Wichita Clutch**

*Pneumatic Clutches and Brakes*  
Wichita Falls, TX - USA  
**1-800-964-3262**  
Bedford, England  
**+44 (0) 1234 350311**

**Linear Products**

**Warner Linear**

*Linear Actuators*  
Belvidere, IL - USA  
**1-800-825-6544**  
*For application assistance:*  
1-800-825-9050  
Saint Barthélemy d'Anjou, France  
**+33 (0)2 41 21 24 24**

**Overrunning Clutches**

**Formsprag Clutch**

*Overrunning Clutches and Holdbacks*  
Warren, MI - USA  
**1-800-348-0881** – Press #1  
*For application assistance:*  
1-800-348-0881 – Press #2

**Marland Clutch**

*Roller Ramp and Sprag Type Overrunning Clutches and Backstops*  
South Beloit, IL - USA  
**1-800-216-3515**

**Stieber Clutch**

*Overrunning Clutches and Holdbacks*  
Heidelberg, Germany  
**+49 (0) 6221-30470**

For information concerning our sales offices in Asia Pacific check our website [www.altramotion.com.cn](http://www.altramotion.com.cn)

While Guardian Industries makes every effort to ensure the accuracy of the information provided, we make no warranty as to the accuracy or completeness of said information.



[www.guardiancouplings.com](http://www.guardiancouplings.com)

300 Indiana Highway 212  
Michigan City, IN 46360 – USA  
219-874-5248  
Fax: 219-879-6643

Merchant Drive, Hertford  
Hertfordshire SG13 7BL - England  
**+44(0)1992 501900**  
Fax: +44 (0)1992 509890



## Rigid Couplings & Shaft Collars



 **Guardian**<sup>®</sup>  
Couplings

An Altra Industrial Motion Company

## ONE-PIECE CLAMPING COLLARS – C1 SERIES

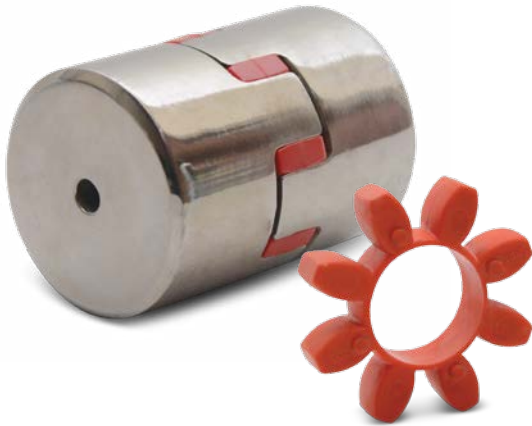


- Design fully engages the shaft without marring
- Greater axial holding power than set screw collars
- Effective on hard and soft shafts

- \* Dimension: Inch
- \* Tolerance: +.003/- .000
- \* Screw lengths are for steel only
- \* Weights are approximate
- \* C1-Series Bore sizes 1 9/16" through 3" do not have a relief cut

Black Oxide Steel	T303 Stainless Steel	Aluminum	Bore Size	OD	Width	Clamp Screw	Box Qty	Weight* (Ounce)
C1-B-2	C1-S-2	C1-A-2	1/8	11/16	5/16	4-40 x 3/8	20	0.44
C1-B-3	C1-S-3	C1-A-3	3/16	11/16	5/16	4-40 x 3/8	20	0.43
C1-B-4	C1-S-4	C1-A-4	1/4	11/16	5/16	4-40 x 3/8	20	0.40
C1-B-5	C1-S-5	C1-A-5	5/16	11/16	5/16	4-40 x 3/8	20	0.36
C1-B-6	C1-S-6	C1-A-6	3/8	7/8	3/8	6-32 x 3/8	20	0.70
C1-B-7	C1-S-7	C1-A-7	7/16	15/16	3/8	6-32 x 3/8	20	0.81
C1-B-8	C1-S-8	C1-A-8	1/2	1 1/8	13/32	8-32 x 1/2	20	1.30
C1-B-9	C1-S-9	C1-A-9	9/16	1 5/16	7/16	10-32 x 1/2	20	2.00
C1-B-10	C1-S-10	C1-A-10	5/8	1 5/16	7/16	10-32 x 1/2	20	1.80
C1-B-11	C1-S-11	C1-A-11	11/16	1 1/2	1/2	10-32 x 1/2	20	2.90
C1-B-12	C1-S-12	C1-A-12	3/4	1 1/2	1/2	1/4-28 x 5/8	20	2.70
C1-B-13	C1-S-13	C1-A-13	13/16	1 5/8	1/2	1/4-28 x 5/8	20	3.20
C1-B-14	C1-S-14	C1-A-14	7/8	1 5/8	1/2	1/4-28 x 5/8	20	2.96
C1-B-15	C1-S-15	C1-A-15	15/16	1 3/4	1/2	1/4-28 x 5/8	20	3.51
C1-B-16	C1-S-16	C1-A-16	1	1 3/4	1/2	1/4-28 x 5/8	20	3.30
C1-B-17	C1-S-17	C1-A-17	1 1/16	1 7/8	1/2	1/4-28 x 5/8	10	3.90
C1-B-18	C1-S-18	C1-A-18	1 1/8	1 7/8	1/2	1/4-28 x 3/4	10	3.63
C1-B-19	C1-S-19	C1-A-19	1 3/16	2 1/16	1/2	1/4-28 x 3/4	10	4.70
C1-B-20	C1-S-20	C1-A-20	1 1/4	2 1/16	1/2	1/4-28 x 3/4	10	4.40
C1-B-21	C1-S-21	C1-A-21	1 5/16	2 1/4	9/16	1/4-28 x 3/4	10	6.19
C1-B-22	C1-S-22	C1-A-22	1 3/8	2 1/4	9/16	1/4-28 x 3/4	10	5.90
C1-B-23	C1-S-23	C1-A-23	1 7/16	2 1/4	9/16	1/4-28 x 3/4	10	5.50
C1-B-24	C1-S-24	C1-A-24	1 1/2	2 3/8	9/16	1/4-28 x 3/4	10	6.30
C1-B-25	C1-S-25	C1-A-25	1 9/16	2 3/8	9/16	1/4-28 x 3/4	10	5.90
C1-B-26	C1-S-26	C1-A-26	1 5/8	2 5/8	11/16	5/16-24 x 1	5	9.65
C1-B-27	C1-S-27	C1-A-27	1 11/16	2 3/4	11/16	5/16-24 x 1	5	10.70
C1-B-28	C1-S-28	C1-A-28	1 3/4	2 3/4	11/16	5/16-24 x 1	5	10.20
C1-B-30	C1-S-30	C1-A-30	1 7/8	2 7/8	11/16	5/16-24 x 1	5	10.90
C1-B-31	C1-S-31	C1-A-31	1 15/16	3	11/16	5/16-24 x 1	5	12.00
C1-B-32	C1-S-32	C1-A-32	2	3	11/16	5/16-24 x 1	5	11.60
C1-B-34	C1-S-34	C1-A-34	2 1/8	3 1/4	3/4	5/16-24 x 1	5	15.20
C1-B-35	C1-S-35	C1-A-35	2 3/16	3 1/4	3/4	5/16-24 x 1	5	14.40
C1-B-36	C1-S-36	C1-A-36	2 1/4	3 1/4	3/4	5/16-24 x 1	5	13.66
C1-B-38	C1-S-38	C1-A-38	2 3/8	3 1/2	3/4	5/16-24 x 1	5	16.50
C1-B-39	C1-S-39	C1-A-39	2 7/16	3 1/2	3/4	5/16-24 x 1	5	15.60
C1-B-40	C1-S-40	C1-A-40	2 1/2	3 3/4	7/8	3/8-24 x 1	5	23.10
C1-B-42	C1-S-42	C1-A-42	2 5/8	3 7/8	7/8	3/8-24 x 1	5	23.90
C1-B-43	C1-S-43	C1-A-43	2 11/16	4	7/8	3/8-24 x 1	5	25.80
C1-B-44	C1-S-44	C1-A-44	2 3/4	4	7/8	3/8-24 x 1	5	29.20
C1-B-46	C1-S-46	C1-A-46	2 7/8	4 1/4	7/8	3/8-24 x 1	5	29.20
C1-B-47	C1-S-47	C1-A-47	2 15/16	4 1/4	7/8	3/8-24 x 1	5	28.00
C1-B-48	C1-S-48	C1-A-48	3	4 1/4	7/8	3/8-24 x 1	5	26.80
C1-B-51	C1-S-51	C1-A-51	3 3/16	4 1/2	7/8	3/8-24 x 1	5	28.30
C1-B-52	C1-S-52	C1-A-52	3 1/4	4 1/2	7/8	3/8-24 x 1	5	27.30
C1-B-55	C1-S-55	C1-A-55	3 7/16	4 3/4	7/8	3/8-24 x 1	5	31.00
C1-B-56	C1-S-56	C1-A-56	3 1/2	4 3/4	7/8	3/8-24 x 1	5	29.10
C1-B-63	C1-S-63	C1-A-63	3 15/16	5 1/4	7/8	3/8-24 x 1	5	35.00
C1-B-64	C1-S-64	C1-A-64	4	5 1/4	7/8	3/8-24 x 1	5	33.00

## OTHER GUARDIAN PRODUCTS

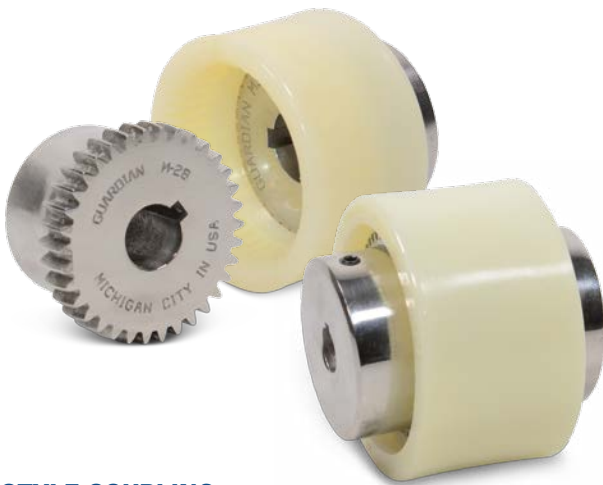


### CURVED JAW COUPLING

- Suitable for high torque applications
- Variable durometer urethane elements
- Stainless steel hubs available
- Great misalignment in the torsional, axial, radial and angular directions

### STRAIGHT JAW COUPLING

- Perfectly interchangeable with other domestic straight jaw couplings
- Spiders available in a variety of durometers and material types
- Black phosphate treated for superior corrosion resistance
- Change in place spider element available



### M-STYLE COUPLING

- Double crowned tooth provides great parallel & angular misalignment
- Optional I-Style provides excellent axial travel for demag motors (up to .500")
- Different sleeve material options for high temp / high torque applications



### GEAR GRIP COUPLING

- Flexible sleeves available in a variety of durometers and material types
- Adjustable lengths can be achieved
- Coupling acts as a mechanical fuse due to its "in-shear" design
- Excellent angular and parallel misalignment capabilities (Up to 7.5 degrees angular)

## TWO-PIECE CLAMPING COLLARS – C2 SERIES



- Design fully engages the shaft without marring
- Effective on hard and soft shafts
- Easily installed where major disassembly would otherwise be required
- Greater axial holding power than set screw or one-piece clamping collars

\* Dimension: Inch

\* Tolerance: +.003/-.000

\* Screw lengths are for steel only

\* Weights are approximate

\* C2-B-51 through C2-B-96 do not have recessed screws

\* C2-S-51 through C2-S-96 do not have recessed screws

Black Oxide Steel	T303 Stainless Steel	Aluminum	Bore Size	OD	Width	Clamp Screw	Box Qty	Weight* (Ounce)
C2-B-2	C2-S-2	C2-A-2	1/8	11/16	5/16	4-40 x 3/8	20	0.43
C2-B-3	C2-S-3	C2-A-3	3/16	11/16	5/16	4-40 x 3/8	20	0.39
C2-B-4	C2-S-4	C2-A-4	1/4	11/16	5/16	4-40 x 3/8	20	0.38
C2-B-5	C2-S-5	C2-A-5	5/16	11/16	5/16	4-40 x 3/8	20	0.34
C2-B-6	C2-S-6	C2-A-6	3/8	7/8	3/8	6-32 x 3/8	20	0.71
C2-B-7	C2-S-7	C2-A-7	7/16	15/16	3/8	6-32 x 3/8	20	0.76
C2-B-8	C2-S-8	C2-A-8	1/2	1 1/8	13/32	8-32 x 1/2	20	1.26
C2-B-9	C2-S-9	C2-A-9	9/16	1 5/16	7/16	10-32 x 1/2	20	2.00
C2-B-10	C2-S-10	C2-A-10	5/8	1 5/16	7/16	10-32 x 1/2	20	1.80
C2-B-11	C2-S-11	C2-A-11	11/16	1 1/2	1/2	10-32 x 1/2	20	2.80
C2-B-12	C2-S-12	C2-A-12	3/4	1 1/2	1/2	1/4-28 x 5/8	20	2.60
C2-B-13	C2-S-13	C2-A-13	13/16	1 5/8	1/2	1/4-28 x 5/8	20	3.10
C2-B-14	C2-S-14	C2-A-14	7/8	1 5/8	1/2	1/4-28 x 5/8	20	2.83
C2-B-15	C2-S-15	C2-A-15	15/16	1 3/4	1/2	1/4-28 x 5/8	20	3.40
C2-B-16	C2-S-16	C2-A-16	1	1 3/4	1/2	1/4-28 x 5/8	20	3.10
C2-B-17	C2-S-17	C2-A-17	1 1/16	1 7/8	1/2	1/4-28 x 5/8	10	3.67
C2-B-18	C2-S-18	C2-A-18	1 1/8	1 7/8	1/2	1/4-28 x 3/4	10	3.50
C2-B-19	C2-S-19	C2-A-19	1 3/16	1 3/16	1/2	1/4-28 x 3/4	10	4.50
C2-B-20	C2-S-20	C2-A-20	1 1/4	1 3/16	1/2	1/4-28 x 3/4	10	4.22
C2-B-21	C2-S-21	C2-A-21	1 5/16	2 1/4	9/16	1/4-28 x 3/4	10	5.90
C2-B-22	C2-S-22	C2-A-22	1 3/8	2 1/4	9/16	1/4-28 x 3/4	10	5.70
C2-B-23	C2-S-23	C2-A-23	1 7/16	2 1/4	9/16	1/4-28 x 3/4	10	5.23
C2-B-24	C2-S-24	C2-A-24	1 1/2	2 3/8	9/16	1/4-28 x 3/4	10	6.06
C2-B-25	C2-S-25	C2-A-25	1 9/16	2 3/8	9/16	1/4-28 x 3/4	10	5.61
C2-B-26	C2-S-26	C2-A-26	1 5/8	2 5/8	11/16	5/16-24 x 1	5	9.31
C2-B-27	C2-S-27	C2-A-27	1 11/16	2 3/4	11/16	5/16-24 x 1	5	9.86
C2-B-28	C2-S-28	C2-A-28	1 3/4	2 3/4	11/16	5/16-24 x 1	5	11.00
C2-B-30	C2-S-30	C2-A-30	1 7/8	2 7/8	11/16	5/16-24 x 1	5	10.46
C2-B-31	C2-S-31	C2-A-31	1 15/16	3	11/16	5/16-24 x 1	5	11.57
C2-B-32	C2-S-32	C2-A-32	2	3	11/16	5/16-24 x 1	5	11.00
C2-B-34	C2-S-34	C2-A-34	2 1/8	3 1/4	3/4	5/16-24 x 1	5	15.00
C2-B-35	C2-S-35	C2-A-35	2 3/16	3 1/4	3/4	5/16-24 x 1	5	14.00
C2-B-36	C2-S-36	C2-A-36	2 1/4	3 1/4	3/4	5/16-24 x 1	5	13.10
C2-B-37	C2-S-37	C2-A-37	2 5/16	3 1/2	3/4	5/16-24 x 1	5	15.90
C2-B-38	C2-S-38	C2-A-38	2 3/8	3 1/2	3/4	5/16-24 x 1	5	15.20
C2-B-39	C2-S-39	C2-A-39	2 7/16	3 1/2	3/4	5/16-24 x 1	5	15.30
C2-B-40	C2-S-40	C2-A-40	2 1/2	3 3/4	7/8	3/8-24 x 1	5	22.30
C2-B-42	C2-S-42	C2-A-42	2 5/8	3 7/8	7/8	3/8-24 x 1	5	24.00
C2-B-43	C2-S-43	C2-A-43	2 11/16	4	7/8	3/8-24 x 1	5	25.00
C2-B-44	C2-S-44	C2-A-44	2 3/4	4	7/8	3/8-24 x 1	5	24.00
C2-B-46	C2-S-46	C2-A-46	2 7/8	4 1/4	7/8	3/8-24 x 1	5	29.00
C2-B-47	C2-S-47	C2-A-47	2 15/16	4 1/4	7/8	3/8-24 x 1	5	26.50
C2-B-48	C2-S-48	C2-A-48	3	4 1/4	7/8	3/8-24 x 1	5	25.80
C2-B-51	C2-S-51	C2-A-51	3 3/16	4 1/2	7/8	3/8-24 x 1	5	28.30
C2-B-52	C2-S-52	C2-A-52	3 1/4	4 1/2	7/8	3/8-24 x 1	5	27.30
C2-B-55	C2-S-55	C2-A-55	3 7/16	4 3/4	7/8	3/8-24 x 1	5	31.00
C2-B-56	C2-S-56	C2-A-56	3 1/2	4 3/4	7/8	3/8-24 x 1	5	29.10
C2-B-60	C2-S-60	C2-A-60	3 3/4	5	7/8	3/8-24 x 1	5	32.00
C2-B-63	C2-S-63	C2-A-63	3 15/16	5 1/4	7/8	3/8-24 x 1	5	35.00
C2-B-64	C2-S-64	C2-A-64	4	5 1/4	7/8	3/8-24 x 1	5	33.00
C2-B-68	C2-S-68	C2-A-68	4 1/4	5 1/2	7/8	3/8-24 x 1	5	35.00
C2-B-71	C2-S-71	C2-A-71	4 7/16	5 3/4	7/8	3/8-24 x 1	5	38.50
C2-B-72	C2-S-72	C2-A-72	4 1/2	5 3/4	7/8	3/8-24 x 1	5	36.00
C2-B-79	C2-S-79	C2-A-79	4 15/16	6 1/4	7/8	3/8-24 x 1	5	42.50
C2-B-80	C2-S-80	C2-A-80	5	6 1/4	7/8	3/8-24 x 1	5	40.10
C2-B-84	C2-S-84	C2-A-84	5 1/4	6 3/4	7/8	3/8-24 x 1	5	42.00
C2-B-88	C2-S-88	C2-A-88	5 1/2	6 3/4	7/8	3/8-24 x 1	5	43.30
C2-B-95	C2-S-95	C2-A-95	5 15/16	7 1/4	7/8	3/8-24 x 1	1	50.30
C2-B-96	C2-S-96	C2-A-96	6	7 1/4	7/8	3/8-24 x 1	1	47.60

## METRIC CLAMPING COLLARS – C1M SERIES &amp; C2M SERIES



- Design fully engages the shaft without marring or other damage
- Two-piece collars are easily installed where major disassembly would otherwise be required
- Greater axial holding power than set screw collars
- Effective on hard and soft shafts

\* Dimension: Millimeter

\* Tolerance: +.08mm/-.00mm

\* Weights are approximate

\* C1M-40 through C1M-80 do not have a relief cut

Black Oxide Steel (1-Piece)	Black Oxide Steel (2-Piece)	Stainless Steel (1-Piece)	Stainless Steel (2-Piece)	Bore Size (mm)	OD (inch)	Width (mm)	Clamp Screw	Box Qty	Weight* (1-Piece)	Weight* (2-Piece)
C1M-B-3	C2M-B-3	C1M-S-3	C2M-S-3	3	11/16	9	M3 x 8	100	0.40	0.40
C1M-B-4	C2M-B-4	C1M-S-4	C2M-S-4	4	11/16	9	M3 x 8	100	0.40	0.40
C1M-B-5	C2M-B-5	C1M-S-5	C2M-S-5	5	11/16	9	M3 x 8	100	0.41	0.41
C1M-B-6	C2M-B-6	C1M-S-6	C2M-S-6	6	3/4	9	M3 x 8	100	0.48	0.48
C1M-B-7	C2M-B-7	C1M-S-7	C2M-S-7	7	3/4	9	M3 x 8	100	0.47	0.47
C1M-B-8	C2M-B-8	C1M-S-8	C2M-S-8	8	1	9	M3 x 10	100	0.90	0.90
C1M-B-9	C2M-B-9	C1M-S-9	C2M-S-9	9	1	9	M3 x 10	50	1.00	1.00
C1M-B-10	C2M-B-10	C1M-S-10	C2M-S-10	10	1	9	M3 x 10	50	1.36	1.36
C1M-B-12	C2M-B-12	C1M-S-12	C2M-S-12	12	1 1/8	11	M4 x 12	50	1.40	1.40
C1M-B-13	C2M-B-13	C1M-S-13	C2M-S-13	13	1 1/4	11	M4 x 12	50	1.60	1.60
C1M-B-14	C2M-B-14	C1M-S-14	C2M-S-14	14	1 1/4	11	M4 x 12	50	1.60	1.60
C1M-B-15	C2M-B-15	C1M-S-15	C2M-S-15	15	1 3/8	13	M5 x 16	50	2.41	2.41
C1M-B-16	C2M-B-16	C1M-S-16	C2M-S-16	16	1 3/8	13	M5 x 16	50	2.30	2.30
C1M-B-17	C2M-B-17	C1M-S-17	C2M-S-17	17	1 1/2	13	M5 x 16	50	2.60	2.60
C1M-B-18	C2M-B-18	C1M-S-18	C2M-S-18	18	1 1/2	13	M5 x 16	50	2.50	2.50
C1M-B-19	C2M-B-19	C1M-S-19	C2M-S-19	19	1 5/8	15	M6 x 16	50	3.70	3.70
C1M-B-20	C2M-B-20	C1M-S-20	C2M-S-20	20	1 5/8	15	M6 x 16	50	3.60	3.60
C1M-B-21	C2M-B-21	C1M-S-21	C2M-S-21	21	1 3/4	15	M6 x 16	50	4.00	4.00
C1M-B-22	C2M-B-22	C1M-S-22	C2M-S-22	22	1 3/4	15	M6 x 16	25	3.90	3.90
C1M-B-23	C2M-B-23	C1M-S-23	C2M-S-23	23	1 7/8	15	M6 x 16	25	4.60	4.60
C1M-B-24	C2M-B-24	C1M-S-24	C2M-S-24	24	1 7/8	15	M6 x 16	25	4.30	4.30
C1M-B-25	C2M-B-25	C1M-S-25	C2M-S-25	25	1 7/8	15	M6 x 16	25	4.20	4.20
C1M-B-26	C2M-B-26	C1M-S-26	C2M-S-26	26	2	15	M6 x 16	25	4.90	4.90
C1M-B-28	C2M-B-28	C1M-S-28	C2M-S-28	28	2	15	M6 x 16	25	4.50	4.50
C1M-B-30	C2M-B-30	C1M-S-30	C2M-S-30	30	2 1/8	15	M6 x 16	25	6.11	6.11
C1M-B-32	C2M-B-32	C1M-S-32	C2M-S-32	32	2 1/8	15	M6 x 16	25	6.02	6.02
C1M-B-34	C2M-B-34	C1M-S-34	C2M-S-34	34	2 1/4	15	M6 x 16	25	6.20	6.20
C1M-B-35	C2M-B-35	C1M-S-35	C2M-S-35	35	2 1/4	15	M6 x 16	25	6.13	6.13
C1M-B-36	C2M-B-36	C1M-S-36	C2M-S-36	36	2 1/4	15	M6 x 16	25	5.90	5.90
C1M-B-38	C2M-B-38	C1M-S-38	C2M-S-38	38	2 3/8	15	M6 x 16	25	5.90	5.90
C1M-B-40	C2M-B-40	C1M-S-40	C2M-S-40	40	2 3/8	15	M6 x 16	25	5.90	5.90
C1M-B-42	C2M-B-42	C1M-S-42	C2M-S-42	42	2 7/8	19	M8 x 25	10	14.00	14.00
C1M-B-45	C2M-B-45	C1M-S-45	C2M-S-45	45	2 7/8	19	M8 x 25	10	12.90	12.90
C1M-B-48	C2M-B-48	C1M-S-48	C2M-S-48	48	3 1/8	19	M8 x 25	10	14.80	14.80
C1M-B-50	C2M-B-50	C1M-S-50	C2M-S-50	50	3 1/8	19	M8 x 25	5	13.80	13.80
C1M-B-54	C2M-B-54	C1M-S-54	C2M-S-54	54	3 1/4	19	M8 x 25	5	14.90	14.90
C1M-B-55	C2M-B-55	C1M-S-55	C2M-S-55	55	3 1/4	19	M8 x 25	5	14.50	14.50
C1M-B-60	C2M-B-60	C1M-S-60	C2M-S-60	60	3 1/2	19	M8 x 25	5	16.20	16.20
C1M-B-65	C2M-B-65	C1M-S-65	C2M-S-65	65	3 3/4	19	M8 x 25	5	16.80	16.80
C1M-B-70	C2M-B-70	C1M-S-70	C2M-S-70	70	4	19	M8 x 25	5	18.30	18.30
C1M-B-75	C2M-B-75	C1M-S-75	C2M-S-75	75	4 1/4	19	M8 x 25	5	19.50	19.50
C1M-B-80	C2M-B-80	C1M-S-80	C2M-S-80	80	4 1/4	19	M8 x 25	5	20.40	20.40

# SET SCREW COLLARS – C SERIES



- Traditional cost effective collar design

\* Dimension: Inch  
 \* Tolerance:  
 Bore 1/16 to 1/2 +.0005/+0.0025  
 Bore 9/16 to 2 +.0005/+0.0030  
 Bore Over 2 +.0010/+0.0040  
 \* Weights are approximate

Zinc Plated Steel	Unplated Steel	Black Oxide Steel	T303 Stainless Steel	Aluminum	Bore Size	OD	Width	Set Screw	Box Qty	Weight* (Ounce)
C-Z-1	C-X-1	C-B-1	C-S-1	C-A-1	1/16	1/4	3/16	2-56 x 1/8	100	0.10
C-Z-1.5	C-X-1.5	C-B-1.5	C-S-1.5	C-A-1.5	3/32	3/8	3/16	6-32 x 1/8	100	0.10
C-Z-2	C-X-2	C-B-2	C-S-2	C-A-2	1/8	3/8	1/4	6-32 x 1/8	100	0.10
C-Z-2.5	C-X-2.5	C-B-2.5	C-S-2.5	C-A-2.5	5/32	7/16	1/4	8-32 x 1/8	100	0.10
C-Z-3	C-X-3	C-B-3	C-S-3	C-A-3	3/16	7/16	1/4	8-32 x 1/8	100	0.10
C-Z-4	C-X-4	C-B-4	C-S-4	C-A-4	1/4	1/2	5/16	10-32 x 1/8	100	0.20
C-Z-5	C-X-5	C-B-5	C-S-5	C-A-5	5/16	5/8	5/16	10-32 x 1/8	100	0.30
C-Z-6	C-X-6	C-B-6	C-S-6	C-A-6	3/8	3/4	3/8	1/4-20 x 3/16	100	0.50
C-Z-7	C-X-7	C-B-7	C-S-7	C-A-7	7/16	7/8	7/16	1/4-20 x 1/4	50	0.80
C-Z-8	C-X-8	C-B-8	C-S-8	C-A-8	1/2	1	7/16	1/4-20 x 1/4	50	1.10
C-Z-9	C-X-9	C-B-9	C-S-9	C-A-9	9/16	1	7/16	1/4-20 x 1/4	50	1.00
C-Z-10	C-X-10	C-B-10	C-S-10	C-A-10	5/8	1 1/8	1/2	5/16-18 x 1/4	50	1.50
C-Z-11	C-X-11	C-B-11	C-S-11	C-A-11	11/16	1 1/4	9/16	5/16-18 x 1/4	50	2.00
C-Z-12	C-X-12	C-B-12	C-S-12	C-A-12	3/4	1 1/4	9/16	5/16-18 x 1/4	50	1.90
C-Z-13	C-X-13	C-B-13	C-S-13	C-A-13	13/16	1 1/4	9/16	5/16-18 x 1/4	25	1.70
C-Z-14	C-X-14	C-B-14	C-S-14	C-A-14	7/8	1 1/2	9/16	5/16-18 x 15/16	25	2.90
C-Z-15	C-X-15	C-B-15	C-S-15	C-A-15	15/16	1 1/2	9/16	5/16-24 x 1/4	25	2.74
C-Z-16	C-X-16	C-B-16	C-S-16	C-A-16	1	1 1/2	5/8	5/16-24 x 1/4	25	2.78
C-Z-17	C-X-17	C-B-17	C-S-17	C-A-17	1 1/16	1 3/4	5/8	5/16-18 x 5/16	25	4.10
C-Z-18	C-X-18	C-B-18	C-S-18	C-A-18	1 1/8	1 3/4	5/8	5/16-18 x 5/16	25	3.90
C-Z-19	C-X-19	C-B-19	C-S-19	C-A-19	1 3/16	2	11/16	3/8-16 x 3/8	25	6.10
C-Z-20	C-X-20	C-B-20	C-S-20	C-A-20	1 1/4	2	11/16	3/8-16 x 3/8	25	5.70
C-Z-21	C-X-21	C-B-21	C-S-21	C-A-21	1 5/16	2 1/8	11/16	3/8-16 x 3/8	25	6.60
C-Z-22	C-X-22	C-B-22	C-S-22	C-A-22	1 3/8	2 1/8	3/4	3/8-16 x 3/8	25	6.70
C-Z-23	C-X-23	C-B-23	C-S-23	C-A-23	1 7/16	2 1/4	3/4	3/8-16 x 3/8	25	7.60
C-Z-24	C-X-24	C-B-24	C-S-24	C-A-24	1 1/2	2 1/4	3/4	3/8-16 x 3/8	25	7.20
C-Z-25	C-X-25	C-B-25	C-S-25	C-A-25	1 9/16	2 1/2	13/16	3/8-16 x 3/8	10	10.70
C-Z-26	C-X-26	C-B-26	C-S-26	C-A-26	1 5/8	2 1/2	13/16	3/8-16 x 3/8	10	10.10
C-Z-27	C-X-27	C-B-27	C-S-27	C-A-27	1 11/16	2 1/2	13/16	3/8-16 x 3/8	10	9.50
C-Z-28	C-X-28	C-B-28	C-S-28	C-A-28	1 3/4	2 5/8	7/8	1/2-13 x 1/2	10	11.40
C-Z-29	C-X-29	C-B-29	C-S-29	C-A-29	1 13/16	2 3/4	7/8	1/2-13 x 1/2	10	12.70
C-Z-30	C-X-30	C-B-30	C-S-30	C-A-30	1 7/8	2 3/4	7/8	1/2-13 x 1/2	10	12.20
C-Z-31	C-X-31	C-B-31	C-S-31	C-A-31	1 15/16	3	7/8	1/2-13 x 1/2	10	15.70
C-Z-32	C-X-32	C-B-32	C-S-32	C-A-32	2	3	7/8	1/2-13 x 1/2	10	14.90
C-Z-34	C-X-34	C-B-34	C-S-34	C-A-34	2 1/8	3	7/8	1/2-13 x 1/2	5	13.30
C-Z-35	C-X-35	C-B-35	C-S-35	C-A-35	2 3/16	3 1/4	15/16	1/2-13 x 1/2	5	18.60
C-Z-36	C-X-36	C-B-36	C-S-36	C-A-36	2 1/4	3 1/4	15/16	1/2-13 x 1/2	5	17.70
C-Z-37	C-X-37	C-B-37	C-S-37	C-A-37	2 5/16	3 1/4	15/16	1/2-13 x 1/2	5	16.80
C-Z-38	C-X-38	C-B-38	C-S-38	C-A-38	2 3/8	3 1/4	15/16	1/2-13 x 1/2	5	15.90
C-Z-39	C-X-39	C-B-39	C-S-39	C-A-39	2 7/16	3 1/2	1	1/2-13 x 1/2	5	21.80
C-Z-40	C-X-40	C-B-40	C-S-40	C-A-40	2 1/2	3 1/2	1	1/2-13 x 1/2	5	20.80
C-Z-41	C-X-41	C-B-41	C-S-41	C-A-41	2 9/16	3 3/4	1	1/2-13 x 1/2	5	25.96
C-Z-42	C-X-42	C-B-42	C-S-42	C-A-42	2 5/8	4	1 1/8	1/2-13 x 1/2	5	35.49
C-Z-43	C-X-43	C-B-43	C-S-43	C-A-43	2 11/16	4	1 1/8	1/2-13 x 1/2	5	34.40
C-Z-44	C-X-44	C-B-44	C-S-44	C-A-44	2 3/4	4	1 1/8	1/2-13 x 1/2	5	33.50
C-Z-46	C-X-46	C-B-46	C-S-46	C-A-46	2 7/8	4	1 1/8	1/2-13 x 1/2	5	29.70
C-Z-47	C-X-47	C-B-47	C-S-47	C-A-47	2 15/16	4	1 1/8	1/2-13 x 1/2	5	29.30
C-Z-48	C-X-48	C-B-48	C-S-48	C-A-48	3	4	1 1/8	1/2-13 x 1/2	5	27.70
C-Z-51	C-X-51	C-B-51	C-S-51	C-A-51	3 3/16	4 1/4	1 1/8	1/2-13 x 1/2	5	31.00
C-Z-52	C-X-52	C-B-52	C-S-52	C-A-52	3 1/4	4 1/4	1 1/8	1/2-13 x 1/2	5	35.00

SET SCREW COLLARS – C SERIES Continued on page 5

## SET SCREW COLLARS – C SERIES CONTINUED

Zinc Plated Steel	Unplated Steel	Black Oxide Steel	T303 Stainless Steel	Aluminum	Bore Size	OD	Width	Set Screw	Box Qty	Weight* (Ounce)
C-Z-55	C-X-55	C-B-55	C-S-55	C-A-55	3 7/16	4 1/2	1 1/8	1/2-13 x 1/2	5	33.00
C-Z-56	C-X-56	C-B-56	C-S-56	C-A-56	3 1/2	4 3/4	1 1/8	1/2-13 x 1/2	5	40.70
C-Z-63	C-X-63	C-B-63	C-S-63	C-A-63	3 15/16	5	1 1/8	1/2-13 x 1/2	5	37.60
C-Z-64	C-X-64	C-B-64	C-S-64	C-A-64	4	5	1 1/8	1/2-13 x 1/2	5	39.00
C-Z-67	C-X-67	C-B-67	C-S-67	C-A-67	4 3/16	5 1/2	1 1/8	1/2-13 x 1/2	5	50.53
C-Z-68	C-X-68	C-B-68	C-S-68	C-A-68	4 1/4	5 1/2	1 1/8	1/2-13 x 1/2	5	55.00
C-Z-71	C-X-71	C-B-71	C-S-71	C-A-71	4 7/16	5 1/2	1 1/8	1/2-13 x 1/2	5	41.20
C-Z-72	C-X-72	C-B-72	C-S-72	C-A-72	4 1/2	5 1/2	1 1/4	1/2-13 x 1/2	5	44.00
C-Z-75	C-X-75	C-B-75	C-S-75	C-A-75	4 11/16	6	1 1/4	1/2-13 x 1/2	5	62.00
C-Z-79	C-X-79	C-B-79	C-S-79	C-A-79	4 15/16	6	1 1/4	1/2-13 x 1/2	5	53.10
C-Z-80	C-X-80	C-B-80	C-S-80	C-A-80	5	6	1 1/4	1/2-13 x 1/2	5	56.00
C-Z-83	C-X-83	C-B-83	C-S-83	C-A-83	5 3/16	6 1/2	1 1/4	1/2-13 x 1/2	5	67.20
C-Z-87	C-X-87	C-B-87	C-S-87	C-A-87	5 7/16	6 1/2	1 1/4	1/2-13 x 1/2	5	55.00
C-Z-91	C-X-91	C-B-91	C-S-91	C-A-91	5 11/16	7	1 1/4	1/2-13 x 1/2	5	72.80
C-Z-95	C-X-95	C-B-95	C-S-95	C-A-95	5 15/16	7	1 1/4	1/2-13 x 1/2	5	57.70

## METRIC SET SCREW COLLARS – CM SERIES



- Traditional cost effective collar designs

- \* Dimension: Millimeter
- \* Tolerance:  
Bore 2 to 12  $\pm 0.01/\pm 0.06$ mm  
Bore 14 to 50  $\pm 0.01/\pm 0.08$ mm
- \* Weights are approximate

Black Oxide Steel	Stainless Steel	Bore Size (mm)	OD (inch)	Width (mm)	Set Screw	Box Qty	Weight* (Ounce)
CM-B-2	CM-S-2	2	1/4	3.5	M2 x 3	100	0.02
CM-B-2.5	CM-S-2.5	2.5	3/8	4	M2 x 3	100	0.03
CM-B-3	CM-S-3	3	3/8	5	M2 x 3	100	0.03
CM-B-4	CM-S-4	4	3/8	5	M2 x 3	100	0.05
CM-B-5	CM-S-5	5	1/2	6	M3 x 3	100	0.09
CM-B-6	CM-S-6	6	1/2	8	M4 x 4	100	0.17
CM-B-8	CM-S-8	8	5/8	8	M4 x 4	100	0.30
CM-B-10	CM-S-10	10	7/8	10	M5 x 5	50	0.60
CM-B-12	CM-S-12	12	7/8	12	M6 x 6	50	0.84
CM-B-14	CM-S-14	14	1	12	M6 x 6	50	1.00
CM-B-15	CM-S-15	15	1	12	M6 x 6	50	1.00
CM-B-16	CM-S-16	16	1 1/8	12	M6 x 6	50	1.30
CM-B-18	CM-S-18	18	1 1/4	14	M6 x 6	50	2.00
CM-B-20	CM-S-20	20	1 1/4	14	M6 x 6	25	1.70
CM-B-22	CM-S-22	22	1 1/2	14	M6 x 6	25	2.30
CM-B-24	CM-S-24	24	1 5/8	14	M8 x 8	25	3.00
CM-B-25	CM-S-25	25	1 5/8	16	M8 x 8	25	3.20
CM-B-28	CM-S-28	28	1 7/8	16	M8 x 8	25	4.10
CM-B-30	CM-S-30	30	1 7/8	16	M8 x 8	25	3.80
CM-B-32	CM-S-32	32	2	16	M8 x 8	25	4.90
CM-B-34	CM-S-34	34	2	16	M8 x 8	25	4.51
CM-B-35	CM-S-35	35	2 1/4	16	M8 x 10	25	6.40
CM-B-36	CM-S-36	36	2 1/4	16	M8 x 10	25	6.10
CM-B-38	CM-S-38	38	2 1/4	16	M8 x 10	25	5.70
CM-B-40	CM-S-40	40	2 3/8	18	M10 x 10	10	7.50
CM-B-45	CM-S-45	45	2 7/8	18	M10 x 10	10	12.60
CM-B-50	CM-S-50	50	3 1/8	18	M10 x 10	5	13.60



# ONE-PIECE INDUSTRY STANDARD CLAMPING COUPLINGS



- High axial load and torque capacity - Does not mar the shaft

\*Weights are approximate

\*Dimension: Inch/Tolerance: +.003/- .000

\*Dimension: Millimeter/Tolerance: +.08/- .00mm

## Steel With & Without Keyway – R1 Series

Black Oxide Steel	Black Oxide Steel With Keyway	Bore Size	2nd Bore Size	OD	Length	Clamp Screw	Box Qty	Weight* (Ounce)
R1-B-4-4	R1-B-4-4-KW	1/4	1/4	1 1/16	1 1/8	4-40 x 3/8	10	1.50
R1-B-6-4	R1-B-6-4-KW	3/8	1/4	7/8	1 3/8	6-32 x 3/8	10	2.70
R1-B-6-6	R1-B-6-6-KW	3/8	3/8	7/8	1 3/8	6-32 x 3/8	5	2.60
R1-B-8-6	R1-B-8-6-KW	1/2	3/8	1 1/8	1 3/4	8-32 x 1/2	5	6.00
R1-B-8-8	R1-B-8-8-KW	1/2	1/2	1 1/8	1 3/4	8-32 x 1/2	5	5.70
R1-B-10-8	R1-B-10-8-KW	5/8	1/2	1 5/16	2	10-32 x 1/2	5	9.00
R1-B-10-10	R1-B-10-10-KW	5/8	5/8	1 5/16	2	10-32 x 1/2	5	8.50
R1-B-12-12	R1-B-12-12-KW	3/4	3/4	1 1/2	2 1/4	1/4-28 x 5/8	5	12.20
R1-B-14-14	R1-B-14-14-KW	7/8	7/8	1 5/8	2 1/2	1/4-28 x 5/8	5	15.40
R1-B-16-8	R1-B-16-8-KW	1	1/2	1 3/4	3	1/4-28 x 5/8	2	23.60
R1-B-16-16	R1-B-16-16-KW	1	1	1 3/4	3	1/4-28 x 5/8	2	20.00
R1-B-20-20	R1-B-20-20-KW	1 1/4	1 1/4	2 1/16	3 1/4	1/4-28 x 3/4	2	28.40
R1-B-22-22	R1-B-22-22-KW	1 3/8	1 3/8	2 1/4	3 1/2	1/4-28 x 3/4	2	37.00
R1-B-24-24	R1-B-24-24-KW	1 1/2	1 1/2	2 5/8	3 7/8	5/16-24 x 1	1	49.50

## Stainless Steel & Aluminum With & Without Keyway – R1 Series

Stainless Steel	Stainless Steel With Keyway	Aluminum	Bore Size	2nd Bore Size	OD	Length	Clamp Screw	Box Qty	Weight* (Ounce)
R1-S-4-4	R1-S-4-4-KW	R1-A-4-4	1/4	1/4	1 1/16	1 1/8	4-40 x 3/8	10	0.52
R1-S-6-6	R1-S-6-6-KW	R1-A-6-6	3/8	3/8	7/8	1 1/8	6-32 x 3/8	5	2.60
R1-S-8-8	R1-S-8-8-KW	R1-A-8-8	1/2	1/2	1 1/8	1 3/4	8-32 x 3/8	5	5.70
R1-S-10-10	R1-S-10-10-KW	R1-A-10-10	5/8	5/8	1 5/16	2	10-32 x 1/2	5	8.50
R1-S-12-12	R1-S-12-12-KW	R1-A-12-12	3/4	3/4	1 1/2	2 1/4	1/4-28 x 5/8	5	12.20
R1-S-14-14	R1-S-14-14-KW	R1-A-14-14	7/8	7/8	1 5/8	2 1/2	1/4-28 x 5/8	5	15.40
R1-S-16-16	R1-S-16-16-KW	R1-A-16-16	1	1	1 3/4	3	1/4-28 x 5/8	2	20.00
R1-S-20-20	R1-S-20-20-KW	R1-A-20-20	1 1/4	1 1/4	2 1/16	3 1/4	1/4-28 x 5/8	2	28.40
R1-S-22-22	R1-S-22-22-KW	R1-A-22-22	1 3/8	1 3/8	2 1/4	3 1/2	1/4-28 x 3/4	2	37.00
R1-S-24-24	R1-S-24-24-KW	R1-A-24-24	1 1/2	1 1/2	2 5/8	3 7/8	5/16-24 x 1	1	49.50

## Steel With & Without Keyway – R1M Series (Metric)

Black Oxide Steel	Black Oxide Steel With Keyway	Bore Size (mm)	2nd Bore Size (mm)	OD (mm)	Length (mm)	Clamp Screw	Box Qty	Weight* (Ounce)
R1M-B-6-6	R1M-B-6-6-KW	6	6	18	30	M3 x 8	10	1.60
R1M-B-8-8	R1M-B-8-8-KW	8	8	24	35	M3 x 10	10	2.80
R1M-B-10-10	R1M-B-10-10-KW	10	10	29	45	M4 x 12	5	6.93
R1M-B-12-12	R1M-B-12-12-KW	12	12	29	45	M4 x 12	5	6.50
R1M-B-14-14	R1M-B-14-14-KW	14	14	34	50	M5 x 16	5	8.80
R1M-B-15-15	R1M-B-15-15-KW	15	15	34	50	M5 x 16	5	8.60
R1M-B-16-16	R1M-B-16-16-KW	16	16	34	50	M5 x 16	5	8.40
R1M-B-20-20	R1M-B-20-20-KW	20	20	42	65	M6 x 16	5	18.00
R1M-B-25-25	R1M-B-25-25-KW	25	25	45	75	M6 x 16	2	22.39
R1M-B-30-30	R1M-B-30-30-KW	30	30	53	83	M6 x 16	2	36.14
R1M-B-35-35	R1M-B-35-35-KW	35	35	67	95	M8 x 25	1	39.00
R1M-B-40-40	R1M-B-40-40-KW	40	40	77	108	M8 x 25	1	90.00
R1M-B-50-50	R1M-B-50-50-KW	50	50	85	124	M10 x 25	1	108.0

STAINLESS STEEL WITH & WITHOUT KEYWAY – R1M SERIES (METRIC) Continued on page 7

## ONE-PIECE INDUSTRY STANDARD CLAMPING COUPLINGS – CONTINUED

### Stainless Steel With & Without Keyway – R1M Series (Metric)

Stainless Steel	Stainless Steel With Keyway	Bore Size (mm)	2nd Bore Size (mm)	OD (mm)	Length (mm)	Clamp Screw	Box Qty	Weight* (Ounce)
R1M-S-6-6	R1M-S-6-6-KW	6	6	18	30	M3 x 8	10	1.60
R1M-S-8-8	R1M-S-8-8-KW	8	8	24	35	M3 x 10	10	2.80
R1M-S-10-10	R1M-S-10-10-KW	10	10	29	45	M4 x 12	5	6.93
R1M-S-12-12	R1M-S-12-12-KW	12	12	29	45	M4 x 12	5	6.50
R1M-S-14-14	R1M-S-14-14-KW	14	14	34	50	M5 x 16	5	8.80
R1M-S-15-15	R1M-S-15-15-KW	15	15	34	50	M5 x 16	5	8.60
R1M-S-16-16	R1M-S-16-16-KW	16	16	34	50	M5 x 16	5	8.40
R1M-S-20-20	R1M-S-20-20-KW	20	20	42	65	M6 x 16	5	18.00
R1M-S-25-25	R1M-S-25-25-KW	25	25	45	75	M6 x 16	2	22.39
R1M-S-30-30	R1M-S-30-30-KW	30	30	53	83	M6 x 16	2	36.14
R1M-S-35-35	R1M-S-35-35-KW	35	35	67	95	M8 x 25	1	39.00
R1M-S-40-40	R1M-S-40-40-KW	40	40	77	108	M8 x 25	1	90.00
R1M-S-50-50	R1M-S-50-50-KW	50	50	85	124	M10 x 25	1	108.00

## TWO-PIECE INDUSTRY STANDARD CLAMPING COUPLINGS



- High axial load and torque capacity - Does not mar the shaft

\*Weights are approximate

\*Dimension: Inch/Tolerance: +.003/- .000

\*Dimension: Millimeter/Tolerance: +.08/- .00mm

### Steel With & Without Keyway – R2 Series

Black Oxide Steel	Black Oxide Steel With Keyway	Bore Size	2nd Bore Size	OD	Length	Clamp Screw	Box Qty	Weight* (Ounce)
R2-B-4-4	R2-B-4-4-KW	1/4	1/4	11/16	1 1/8	4-40 x 3/8	10	1.50
R2-B-6-6	R2-B-6-6-KW	3/8	3/8	7/8	1 3/8	6-32 x 3/8	5	2.60
R2-B-8-8	R2-B-8-8-KW	1/2	1/2	1 1/8	1 3/4	8-32 x 3/8	5	5.70
R2-B-10-10	R2-B-10-10-KW	5/8	5/8	1 5/16	2	10-32 x 1/2	5	8.50
R2-B-12-12	R2-B-12-12-KW	3/4	3/4	1 1/2	2 1/4	1/4-28 x 5/8	5	12.20
R2-B-14-14	R2-B-14-14-KW	7/8	7/8	1 5/8	2 1/2	1/4-28 x 5/8	5	15.40
R2-B-16-16	R2-B-16-16-KW	1	1	1 3/4	3	1/4-28 x 5/8	2	23.60
R2-B-20-20	R2-B-20-20-KW	1 1/4	1 1/4	2 1/16	3 1/4	1/4-28 x 3/4	2	28.40
R2-B-22-22	R2-B-22-22-KW	1 3/8	1 3/8	2 1/2	3 5/8	5/16-24 x 1	2	37.00
R2-B-24-24	R2-B-24-24-KW	1 1/2	1 1/2	2 5/8	3 7/8	5/16-24 x 1	1	49.50

## Stainless Steel With & Without Keyway – R2 Series

Stainless Steel	Stainless Steel With Keyway	Bore Size	2nd Bore Size	OD	Length	Clamp Screw	Box Qty	Weight* (Ounce)
R2-S-6-6	R2-S-6-6-KW	3/8	3/8	7/8	1 3/8	6-32 x 3/8	5	2.60
R2-S-8-8	R2-S-8-8-KW	1/2	1/2	1 1/8	1 3/4	8-32 x 3/8	5	5.70
R2-S-10-10	R2-S-10-10-KW	5/8	5/8	1 5/16	2	10-32 x 1/2	5	8.50
R2-S-12-12	R2-S-12-12-KW	3/4	3/4	1 1/2	2 1/4	1/4-28 x 5/8	5	12.20
R2-S-14-14	R2-S-14-14-KW	7/8	7/8	1 5/8	2 1/2	1/4-28 x 5/8	5	15.40
R2-S-16-16	R2-S-16-16-KW	1	1	1 3/4	3	1/4-28 x 5/8	2	23.60
R2-S-20-20	R2-S-20-20-KW	1 1/4	1 1/4	2 1/16	3 1/4	1/4-28 x 5/8	2	28.40
R2-S-22-22	R2-S-22-22-KW	1 3/8	1 3/8	2 1/2	3 5/8	5/16-24 x 1	2	37.00
R2-S-24-24	R2-S-24-24-KW	1 1/2	1 1/2	2 5/8	3 7/8	5/16-24 x 1	1	49.50

## Steel With & Without Keyway – R2M Series (Metric)

Black Oxide Steel	Black Oxide Steel With Keyway	Bore Size (mm)	2nd Bore Size (mm)	OD (mm)	Length (mm)	Clamp Screw	Box Qty	Weight* (Ounce)
R2M-B-6-6	R2M-B-6-6-KW	6	6	18	30	M3 x 8	10	1.50
R2M-B-8-8	R2M-B-8-8-KW	8	8	24	35	M3 x 10	10	2.70
R2M-B-10-10	R2M-B-10-10-KW	10	10	29	45	M4 x 12	5	6.83
R2M-B-12-12	R2M-B-12-12-KW	12	12	29	45	M4 x 12	5	6.40
R2M-B-14-14	R2M-B-14-14-KW	14	14	34	50	M5 x 16	5	8.60
R2M-B-15-15	R2M-B-15-15-KW	15	15	34	50	M5 x 16	5	8.40
R2M-B-16-16	R2M-B-16-16-KW	16	16	34	50	M5 x 16	5	8.20
R2M-B-20-20	R2M-B-20-20-KW	20	20	42	65	M6 x 16	5	17.60
R2M-B-25-25	R2M-B-25-25-KW	25	25	45	75	M6 x 16	2	21.90
R2M-B-30-30	R2M-B-30-30-KW	30	30	53	83	M6 x 16	2	35.60
R2M-B-35-35	R2M-B-35-35-KW	35	35	67	95	M8 x 25	1	38.40
R2M-B-40-40	R2M-B-40-40-KW	40	40	77	108	M8 x 25	1	89.00
R2M-B-50-50	R2M-B-50-50-KW	50	50	85	124	M10 x 25	1	110.00

## Stainless Steel With & Without Keyway – R2M Series (Metric)

Stainless Steel	Stainless Steel With Keyway	Bore Size (mm)	2nd Bore Size (mm)	OD (mm)	Length (mm)	Clamp Screw	Box Qty	Weight* (Ounce)
R2M-S-6-6	R2M-S-6-6-KW	6	6	18	30	M3 x 8	10	1.50
R2M-S-8-8	R2M-S-8-8-KW	8	8	24	35	M3 x 10	10	2.70
R2M-S-10-10	R2M-S-10-10-KW	10	10	29	45	M4 x 12	5	6.83
R2M-S-12-12	R2M-S-12-12-KW	12	12	29	45	M4 x 12	5	6.40
R2M-S-14-14	R2M-S-14-14-KW	14	14	34	50	M5 x 16	5	8.60
R2M-S-15-15	R2M-S-15-15-KW	15	15	34	50	M5 x 16	5	8.40
R2M-S-16-16	R2M-S-16-16-KW	16	16	34	50	M5 x 16	5	8.20
R2M-S-20-20	R2M-S-20-20-KW	20	20	42	65	M6 x 16	5	17.60
R2M-S-25-25	R2M-S-25-25-KW	25	25	45	75	M6 x 16	2	21.90
R2M-S-30-30	R2M-S-30-30-KW	30	30	53	83	M6 x 16	2	35.60
R2M-S-35-35	R2M-S-35-35-KW	35	35	67	95	M8 x 25	1	38.40
R2M-S-40-40	R2M-S-40-40-KW	40	40	77	108	M8 x 25	1	89.00
R2M-S-50-50	R2M-S-50-50-KW	50	50	85	124	M10 x 25	1	110.00

## SET SCREW COUPLINGS



- Traditional cost effective rigid coupling design provides torque transmission and alignment

\* Dimension: Inch

\* Tolerance:

Bore 1/4 to 1/2 +.005/+.0025

Bore 5/8 to 1 1/2 +.005/+.0030

\* Weights are approximate

\* Screw lengths are for parts without keyway

\* Dimension: Millimeter

\* Tolerance:

Bore 10 to 12 +.01/+.06mm

Bore 15 to 40 +.01/+.08mm

### Steel With & Without Keyway – R Series

Black Oxide Steel	Black Oxide Steel With Keyway	Bore Size	OD	Length	Set Screw	Box Qty	Weight* (Ounce)
R-B-4	R-B-4-KW	1/4	1/2	3/4	10-32 x 1/8	20	0.45
R-B-5	R-B-5-KW	5/16	5/8	1	10-32 x 1/8	20	1.00
R-B-6	R-B-6-KW	3/8	3/4	1	1/4-20 x 3/16	20	1.40
R-B-8	R-B-8-KW	1/2	1	1 1/2	1/4-20 x 1/4	5	3.80
R-B-10	R-B-10-KW	5/8	1 1/4	2	5/16-18 x 5/16	5	8.00
R-B-12	R-B-12-KW	3/4	1 1/2	2	5/16-18 x 3/8	5	11.60
R-B-14	R-B-14-KW	7/8	1 3/4	2	5/16-18 x 5/16	5	16.00
R-B-16	R-B-16-KW	1	2	3	5/16-18 x 1/2	2	32.00
R-B-18	R-B-18-KW	1 1/8	2 1/8	3	3/8-16 x 1/2	2	40.15
R-B-20	R-B-20-KW	1 1/4	2 1/4	4	3/8-16 x 1/2	2	48.30
R-B-22	R-B-22-KW	1 3/8	2 1/2	4 1/2	3/8-16 x 1/2	1	55.15
R-B-24	R-B-24-KW	1 1/2	2 1/2	4 1/2	3/8-16 x 1/2	1	62.00

### Stainless Steel & Aluminum With & Without Keyway – R Series

Stainless Steel	Stainless Steel With Keyway	Aluminum	Bore Size	OD	Length	Set Screw	Box Qty	Weight* (Ounce)
R-S-4	R-S-4-KW	R-A-4	1/4	1/2	3/4	10-32 x 1/8	20	0.45
R-S-5	R-S-5-KW	R-A-5	5/16	5/8	1	10-32 x 1/8	20	1.00
R-S-6	R-S-6-KW	R-A-6	3/8	3/4	1	1/4-20 x 3/16	20	1.40
R-S-8	R-S-8-KW	R-A-8	1/2	1	1 1/2	1/4-20 x 1/4	5	3.80
R-S-10	R-S-10-KW	R-A-10	5/8	1 1/4	2	5/16-18 x 5/16	5	8.00
R-S-12	R-S-12-KW	R-A-12	3/4	1 1/2	2	5/16-18 x 3/8	5	11.60
R-S-14	R-S-14-KW	R-A-14	7/8	1 3/4	2	5/16-18 x 5/16	5	16.00
R-S-16	R-S-16-KW	R-A-16	1	2	3	5/16-18 x 1/2	2	32.00
R-S-20	R-S-20-KW	R-A-20	1 1/4	2 1/4	4	3/8-16 x 1/2	2	48.30

### Steel With & Without Keyway – RM Series (Metric)

Black Oxide Steel	Black Oxide Steel With Keyway	Bore Size	OD	Length	Set Screw	Box Qty	Weight* (Ounce)
RM-B-10	RM-B-10-KW	10	19	25	M5 x 5	5	1.40
RM-B-10	RM-B-10-KW	10	19	25	M5 x 5	5	1.40
RM-B-12	RM-B-12-KW	12	22	38	M6 x 6	5	3.50
RM-B-15	RM-B-15-KW	15	31	50	M6 x 6	5	8.00
RM-B-20	RM-B-20-KW	20	38	50	M6 x 6	5	11.60
RM-B-25	RM-B-25-KW	25	50	76	M8 x 8	2	32.00
RM-B-30	RM-B-30-KW	30	57	101	M8 x 8	2	47.00
RM-B-35	RM-B-35-KW	35	63	114	M10 x 10	1	55.00

### Stainless Steel With & Without Keyway – RM Series (Metric)

Stainless Steel	Stainless Steel With Keyway	Bore Size (mm)	OD (mm)	Length (mm)	Clamp Screw	Box Qty	Weight* (Ounce)
RM-S-10	RM-S-10-KW	10	19	25	M5 x 5	5	1.40
RM-S-12	RM-S-12-KW	12	22	38	M6 x 6	5	3.50
RM-S-15	RM-S-15-KW	15	31	50	M6 x 6	5	8.00
RM-S-20	RM-S-20-KW	20	38	50	M6 x 6	5	11.60
RM-S-25	RM-S-25-KW	25	50	76	M8 x 8	2	32.00
RM-S-30	RM-S-30-KW	30	57	101	M8 x 8	2	47.00
RM-S-35	RM-S-35-KW	35	63	114	M10 x 10	1	55.00
RM-S-40	RM-S-40-KW	40	63	114	M10 x 10	1	62.00