



FH Flywheel Coupling & HH Coupling

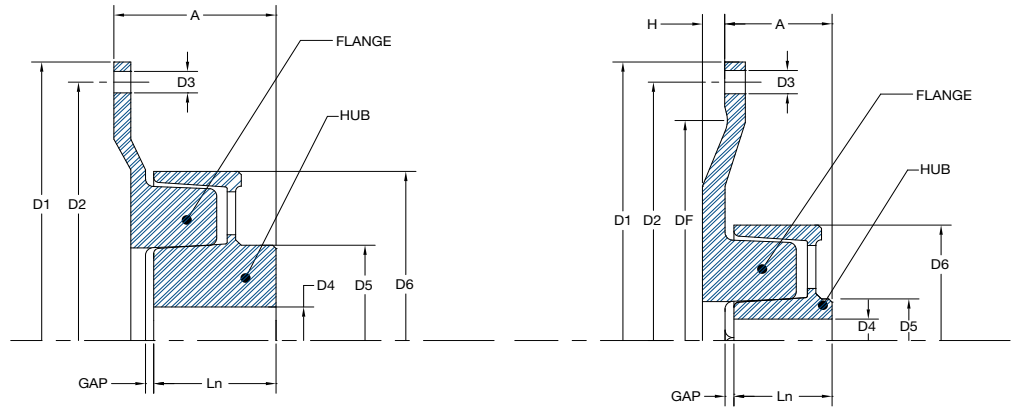


FEATURES AND ADVANTAGES

The FH/HH coupling is considered a failsafe jaw coupling that has progressive characteristics. For instance the dynamic torsional stiffness is enhanced with increasing the coupling load. This type of feature gives a distinct advantage in applications where a wide range is used and the torque increases with speed. The resulting characteristics provide the FH/HH coupling with a relatively low torsional stiffness that places the critical speed (resonance) below the operational speed of the system.

The five standard coupling sizes cover a nominal torque range up to 88,500 in.-lbs. These couplings may be favorably used in applications such as diesel engine-generator sets, welding sets, blowers, compressors, and centrifugal pumps.

The FH/HH coupling hubs and flanges are produced from a high strength cast iron. The rubber is manufactured from NBR which is resistant to oil and abrasion. It is available in three different hardness levels 50, 60, and 75 shore A. These couplings can operate in a temperature range of -15°F to 195°F.



Technical Data

Coupling Size	Hardness Shore A	Nominal Torque TKN in.-lbs	Maximum Torque TKM in.-lbs	Max. Vibratory Torque TKV in.-lbs	Dampening Factor	Amplification at Resonance	Torsional Stiffness (in.-lbs / Radian x 1000)				Max. Rotational Speed
							25% TKN	50% TKN	75% TKN	100% TKN	
6	50	2,478	8,850	1,239	1.15	5.5	19.47	31.86	48.68	72.57	5900
	60	3,540	12,390	1,770	1.25	5.0	28.32	38.94	53.98	75.23	
	75	5,310	15,930	2,655	1.35	4.7	65.49	77.00	112.40	169.92	
12	50	4,965	17,700	2,478	1.15	5.5	60.18	115.94	174.35	235.41	4800
	60	7,080	24,780	3,540	1.25	5.0	90.27	140.72	202.67	284.10	
	75	10,620	31,860	5,310	1.35	4.7	181.43	259.31	392.94	580.56	
25	50	11,063	33,188	5,532	1.15	5.5	209.75	256.65	431.88	561.09	4300
	60	14,160	49,560	7,080	1.25	5.0	266.39	376.13	516.84	689.42	
	75	22,125	66,375	11,063	1.35	4.7	575.25	770.84	1,111.56	1,600.08	
50	50	22,125	66,375	11,063	1.15	5.5	325.68	502.68	681.45	862.00	3400
	60	28,320	99,120	14,160	1.25	5.0	560.21	697.38	855.80	1,035.45	
	75	44,250	132,750	22,125	1.35	4.7	1,159.35	1,431.00	1,705.40	1,979.75	
6	50	44,250	177,000	22,125	1.15	5.5	769.95	1,075.28	1,398.30	1,750.53	2700
	60	56,640	198,240	28,320	1.25	5.0	1,173.51	1,558.49	2,003.64	2,508.09	
	75	88,500	265,500	44,250	1.35	4.7	2,492.16	3,292.20	4,109.00	4,944.50	



SAE Flange Dimensions

SAE Flywheel Size	D1 Outer Diameter		D2 Bolt Circle		# of Holes	D3 Hole Size	
	in.	mm	in.	mm		in.	mm
6.5	8.500	215.9	7.875	200.0	6 x 60°	.354	9
7.5	9.500	241.3	8.750	222.3	8 x 45°	.354	9
8	10.375	263.5	9.625	244.5	6 x 60°	.433	11
10	12.375	314.3	11.625	295.3	8 x 45°	.433	11
11.5	13.875	352.4	13.125	333.4	8 x 45°	.433	11
14	18.375	466.7	17.250	438.2	8 x 45°	.512	13
18	22.500	571.5	21.375	542.9	6 x 60°	.670	17



SAE Flange Dimensions *Continued*

FH Size	SAE Flywheel Size	Design	A	Ln.	D4 Min.	D4 Max.	D5	D6	Gap	DF	H	Weight	Flange Inertia	Hub Inertia
			in.	in.	in.	in.	in.	in.	in.	in.	in.	in.	#	In-lbs Sec.2
6	8	1	2.875	2.165	-	2.362	3.543	6.300	.157	-	-	15	.241	.086
	8	1	4.331	3.622	-	2.362	3.543	6.300	.157	-	-	19	.241	.100
	10	1	2.875	2.165	-	2.362	3.543	6.300	.157	-	-	18	.498	.803
	10	1	4.331	3.622	-	2.362	3.543	6.300	.157	-	-	22	.498	.100
	11.5	2	2.323	2.165	-	2.362	3.543	6.300	.157	11.811	.394	21	.815	.803
	11.5	2	3.780	3.622	-	2.362	3.543	6.300	.157	11.811	.394	25	.815	.100
12	10	1	3.819	3.228	-	2.953	4.528	7.795	.157	8.858	.236	30	.576	.292
	10	1	4.764	4.173	-	2.953	4.528	7.795	.157	8.858	.236	34	.576	.318
	11.5	1	4.213	3.228	-	2.593	4.528	7.795	.157	-	-	32	.824	.292
	11.5	1	5.157	4.173	-	2.593	4.528	7.795	.157	-	-	36	.824	.318
	14	2	3.661	3.228	-	2.593	4.528	7.795	.157	13.583	.236	41	2.370	.292
	14	2	4.606	4.173	-	2.593	4.528	7.795	.157	13.583	.236	45	2.370	.318
25	11.5	1	4.213	3.228	-	3.150	4.882	8.661	.157	-	-	39	.936	.508
	11.5	1	5.787	4.803	-	3.150	4.882	8.661	.157	-	-	46	.936	.567
	14	2	3.661	3.228	-	3.150	4.882	8.661	.157	13.583	.236	47	2.482	.508
	14	2	5.236	4.803	-	3.150	4.882	8.661	.157	13.583	.236	55	2.482	.567
50	11.5	1	4.213	3.228	-	3.740	5.709	10.827	.157	-	-	54	1.189	1.292
	11.5	1	6.575	5.591	-	3.740	5.709	10.827	.157	-	-	70	1.189	1.458
	14	2	3.661	3.228	-	3.740	5.709	10.827	.157	13.583	.236	63	2.735	1.292
	14	2	6.024	5.591	-	3.740	5.709	10.827	.157	13.583	.236	79	2.735	1.458
100	14	2	3.661	3.543	2.559	4.724	7.560	13.780	.157	15.591	.591	107	4.129	4.460
	14	2	6.024	5.906	2.559	4.724	7.560	13.780	.157	15.591	.591	132	4.129	4.968
	18	1	4.724	3.543	2.559	4.724	7.560	13.780	.157	-	-	121	7.921	4.460
	18	1	7.087	5.906	2.559	4.724	7.560	13.780	.157	-	-	146	7.921	4.968

HOW TO ORDER

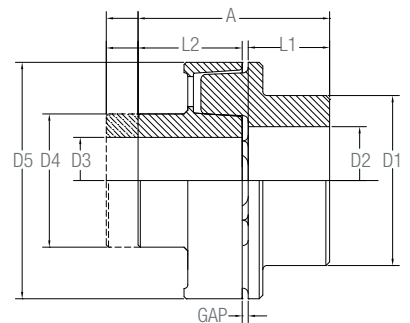
Coupling Size	Rubber Hardness	Flange Ø	OAL Required	Finished Bore
25	60	14	3.661	2.250

Coupling Dimensions

HH SIZE	TKN in-lbs	TKM in-lbs	Max RPM	A	L1	L2	Gap	D1	D2 Min	D2 Max.	D3 Min	D3 Max.	D4	D5	Weight
				in.	in.	in.	in.	in.	in.	in.	in.	in.	in.	in.	in.
6	5,310	15,930	5,900	4.48	2.17	2.17	.16	4.53	-	2.95	-	2.36	3.54	6.30	20
				5.94											3.62
12	10,620	31,860	4,800	5.94	2.56	3.23	.16	5.12	-	3.35	-	2.95	4.53	7.80	38
				6.89											4.17
25	22,125	66,375	4,300	6.54	3.15	3.23	.16	6.10	-	3.94	-	3.15	4.88	8.66	56
				8.11											4.80
50	44,250	132,750	3,400	7.13	3.74	3.23	.16	7.28	-	4.72	-	3.74	5.71	10.83	92
				9.49											5.59
100	88,500	265,500	2,700	8.43	4.72	3.54	.16	8.66	2.56	5.51	2.56	4.72	7.56	13.78	165
				10.79											5.91

HH COUPLING

The Guardex HH design is a shaft to shaft version of the FH flywheel design. The HH is an elastic, torsionally soft jaw style coupling in compression, with a nominal torque rating to 88,500 in-lbs. These couplings are best suited for the absorption of shock loading, and consist of (2) cast iron hubs and variable durometer rubber elements.



Torsional Angle		Angular Displacement	
3° - 5°		1°	
Axial Displacement		Radial Displacement	
.118" Max.		.040"	

<p>Belted Drives and Sheaves</p> <p>TB Wood's <i>Belted Drives</i> Chambersburg, PA - USA 1-888-829-6637 – Press #5 <i>For application assistance:</i> 1-888-829-6637 – Press #7</p> <p>Couplings</p> <p>Ameridrives Couplings <i>Mill Spindles, Ameriflex, Ameridisc</i> Erie, PA - USA 1-814-480-5000 <i>Gear Couplings</i> San Marcos, TX - USA 1-800-458-0887</p> <p>Ameridrives Power Transmission <i>Universal Joints, Drive Shafts, Mill Gear Couplings</i> Green Bay, WI - USA 1-920-593-2444</p> <p>Bibby Turboflex <i>Disc, Gear, Grid Couplings, Overload Clutches</i> Dewsbury, England +44 (0) 1924 460801 Boksburg, South Africa +27(0) 11 918 4270</p> <p>Guardian Couplings <i>Engineered Flywheel Couplings, Engine Housings and Pump Mounts, Flexible Shaft Couplings</i> Michigan City, IN - USA 1-219-874-5248</p> <p>Huco Dynatork <i>Precision Couplings and Air Motors</i> Hertford, England +44 (0) 1992 501900 Chambersburg, PA - USA 1-888-829-6637</p>	<p>Couplings Cont.</p> <p>Lamiflex Couplings <i>Flexible Couplings, Bearing Isolators, and Coupling Guards</i> Cotia, SP - Brasil +55 (11) 4615-6300</p> <p>TB Wood's <i>Elastomeric Couplings</i> Chambersburg, PA - USA 1-888-829-6637 – Press #5 <i>For application assistance:</i> 1-888-829-6637 – Press #7 <i>General Purpose Disc Couplings</i> San Marcos, TX - USA 1-888-449-9439</p> <p>Electromagnetic Clutches and Brakes</p> <p>Inertia Dynamics <i>Spring Set Brakes; Power On and Wrap Spring Clutch/Brakes</i> New Hartford, CT - USA 1-800-800-6445</p> <p>Matrix International <i>Electromagnetic Clutches and Brakes, Pressure Operated Clutches and Brakes</i> Brechin, Scotland +44 (0) 1356 602000 New Hartford, CT - USA 1-800-825-6544</p> <p>Warner Electric <i>Electromagnetic Clutches and Brakes</i> New Hartford, CT - USA 1-800-825-6544 <i>For application assistance:</i> 1-800-825-9050 Saint Barthélemy d'Anjou, France +33 (0)2 41 21 24 24 <i>Precision Electric Coils and Electromagnetic Clutches and Brakes</i> Columbia City, IN - USA 1-260-244-6183</p>	<p>Engineered Bearing Assemblies</p> <p>Kilian Manufacturing <i>Engineered Bearing Assemblies</i> Syracuse, NY - USA 1-315-432-0700</p> <p>Gearing</p> <p>Bauer Gear Motor <i>Geared Motors</i> Esslingen, Germany +49 (711) 3518-0 Somerset, NJ - USA 1-732-469-8770</p> <p>Boston Gear <i>Enclosed and Open Gearing, Electrical and Mechanical P.T. Components</i> Charlotte, NC - USA 1-800-825-6544 <i>For application assistance:</i> 1-800-816-5608</p> <p>Nuttall Gear and Delroyd Worm Gear <i>Worm Gear and Helical Speed Reducers</i> Niagara Falls, NY - USA 1-716-298-4100</p> <p>Heavy Duty Clutches and Brakes</p> <p>Industrial Clutch <i>Pneumatic and Oil Immersed Clutches and Brakes</i> Waukesha, WI - USA 1-262-547-3357</p> <p>Svendborg Brakes <i>Industrial Brakes and Brake Systems</i> Vejstrup, Denmark +45 63 255 255</p> <p>Twiflex Limited <i>Caliper Brakes and Thrusters</i> Wichita Falls, TX - USA 1-844-723-3483 Twickenham, England +44 (0) 20 8894 1161</p>	<p>Heavy Duty Clutches and Brakes Cont.</p> <p>Wichita Clutch <i>Pneumatic Clutches and Brakes</i> Wichita Falls, TX - USA 1-800-964-3262 Bedford, England +44 (0) 1234 350311</p> <p>Linear Products</p> <p>Warner Linear <i>Linear Actuators</i> Belvidere, IL - USA 1-800-825-6544 <i>For application assistance:</i> 1-800-825-9050 Saint Barthélemy d'Anjou, France +33 (0)2 41 21 24 24</p> <p>Overrunning Clutches</p> <p>Formsprag Clutch <i>Overrunning Clutches and Holdbacks</i> Warren, MI - USA 1-800-348-0881 – Press #1 <i>For application assistance:</i> 1-800-348-0881 – Press #2</p> <p>Marland Clutch <i>Roller Ramp and Sprag Type Overrunning Clutches and Backstops</i> South Beloit, IL - USA 1-800-216-3515</p> <p>Stieber Clutch <i>Overrunning Clutches and Holdbacks</i> Heidelberg, Germany +49 (0) 6221-30470</p> <p><i>For information concerning our sales offices in Asia Pacific check our website www.altramotion.com.cn</i></p>
--	---	---	--

While Guardian Industries makes every effort to ensure the accuracy of the information provided, we make no warranty as to the accuracy or completeness of said information.



www.guardiancouplings.com

300 Indiana Highway 212
Michigan City, IN 46360 – USA
219-874-5248
Fax: 219-879-6643

Merchant Drive, Hertford
Hertfordshire SG13 7BL - England
+44(0)1992 501900
Fax: +44 (0)1992 509890